

Reception Curriculum

Marvellous Me



A focus on **personal development** to support children to celebrate what makes them special. Children will learn about feelings and how to stay safe. They will start to understand events that have happened in the past and also about features of their local area. Children will also create personal art and self-portraits. As children move into KS1 this learning will support the development of chronology in history

Helpful Heroes



A focus on **personal development** to support children to know who keeps us safe. Children will continue to learn about seasons and our local area. They will meet local police, dentists and other helpful heroes.

Amazing Animals, Wonderful World



A focus on **understanding the world** giving children the opportunity to explore native animals and exotic species. Children will learn about habitats, life cycles and take part in planting and growing. As children move into KS1 this learning will support the development of science and geography

Transport and Travel



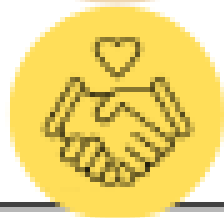
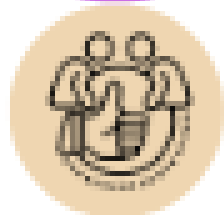
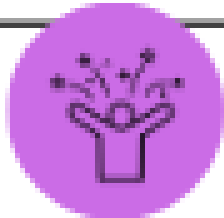
A focus on **understanding the world** giving children the opportunity to deepen their locational knowledge of our community. Children will learn about transport and travel and how this can help us explore our city and the wider world. As children move into KS1 this learning will support the development of geography and environmental impact.

Y1 Curriculum

Amazing Me

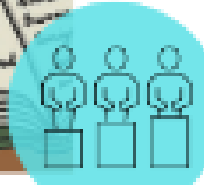
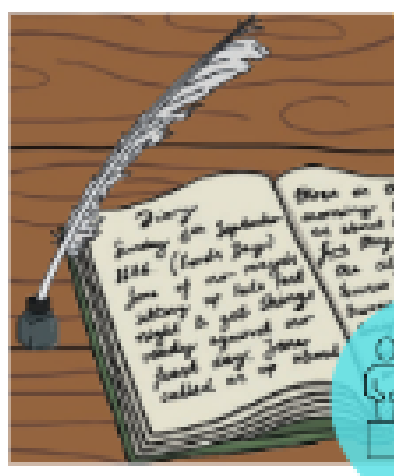
Amazing!

Wow!



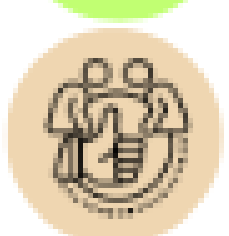
A **personal development** focus to begin learning in KS1. Children will learn about what makes them special, how relationships are formed and how to stay healthy. They will celebrate their differences and use stories to explore feelings.

Great Fire of London



A focus on **history** beyond living memory with an introduction to our TLA Timeline. Children will learn about chronological order, how historical evidence is gathered and what life was like in London at the time of the fire.

Yorkshire



A focus on **geography** and our local area. Children will learn about our community, city and county to develop strong mapping skills and the points of the compass. They will know that we live in England.

Peru



A focus on **geography** both in the UK and the contrasting county of Peru. Children will learn more about seasons, will use maps and begin to make comparisons. They will use the story of Paddington to bring this learning to life.

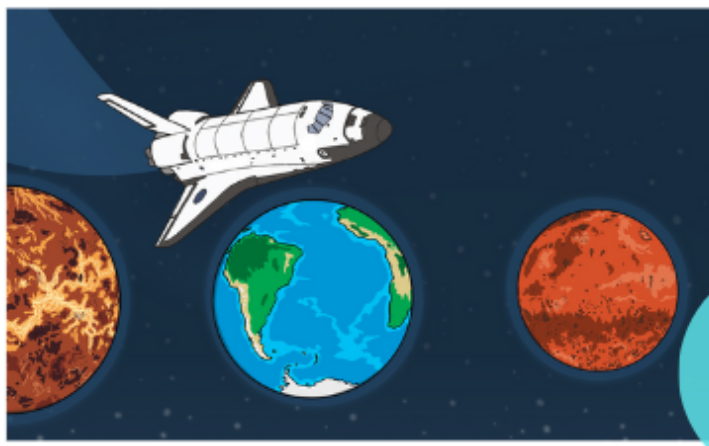
Victorians



A focus on a significant figure from **history** and life in the Victorian era. Children will learn what life was like for a Victorian child and about important inventors from that period of history that still impact our lives today.

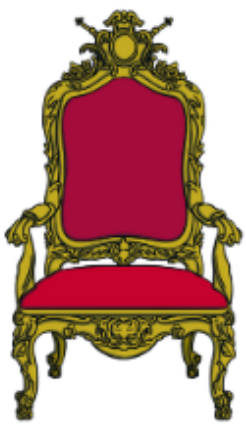
Y2 Curriculum

Space



A focus on **history** in the modern period and significant individuals who have influenced Science and Mathematics. Children will learn about our Solar System and how human achievements have influenced our lives today.

Royals and Castles



A focus on **history** and significant individuals that have influence the local area. With links to Yorkshire. Children will learn about the importance of castles and how royal families reigned our country.

Antarctica



A focus on **geography** and contrasting habitats around the world. Children will learn about famous explorers and journeys, while also deepening their understanding of physical and human geography.

The Sahara Desert

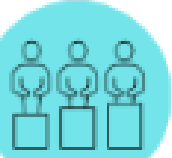
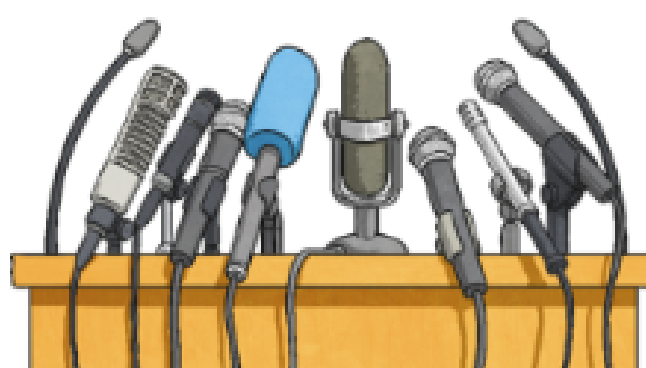


A focus on **history** and an event beyond living memory. Children build on their understanding of chronology and look at the living conditions for different classes at the time the Titanic sailed.

Titanic



Powerful Voices



A focus on **history** and an event beyond living memory. Children will learn about the Suffragettes and Civil Rights Movement and pivotal points in history that have brought about changes to law for equality.

Y3 Curriculum

China



A focus on **geography** and comparing a contrasting country. Children will strengthen locational knowledge from KS1 and learn about the physical and human geography of China. They do this through the eye of a child in China to support with real life comparisons.

Mountains



A focus on physical **geography** to give children the foundational knowledge needed in Y4 to study volcanoes. Children will learn about how mountains are formed, key vocabulary and about the plants and animals that survive in these habitats.

Stone Age to Iron Age



A focus on **history** and the changes to Britain in this period. Children will continue to learn about chronology, comparing this period with others previously encountered. They will learn about life at this time and use a range of evidence sources.

Mayans



A focus on **history** of a non-European civilization. Children will learn about the achievements of this early civilization and how we are still benefiting from their inventions today! Chocolate!

The Rainforest



A focus on **geography** and the development of mapping skills. Children will learn to recognise the features of a rain forest, where in the world these environments thrive and about the plants and animals that survive in these habitats.

Y4 Curriculum

Romans



A focus on **history** but building on knowledge from the topic on Italy. Children will learn about the impact of the Roman Empire on Britain. Children will begin to understand why Britain was invaded and what daily life was like under Roman rule.

The River Thames



A focus on **geography** and our capital city London. Children will develop their knowledge of our capital city and the importance of the River Thames. They will compare both the physical and human geography of the river and how it plays an important role in the water cycle.

Volcanoes



A focus on physical **geography** while making links to Italy and active volcanoes. Children will learn about the impact of volcanoes on both humans and the physical environment.

Recycling and Sustainability



A focus on environmental **geography** and how our behaviour as humans impacts on our local and global community. Children will learn about pollution, how to reduce, reuse and recycle to have a positive impact on our world.

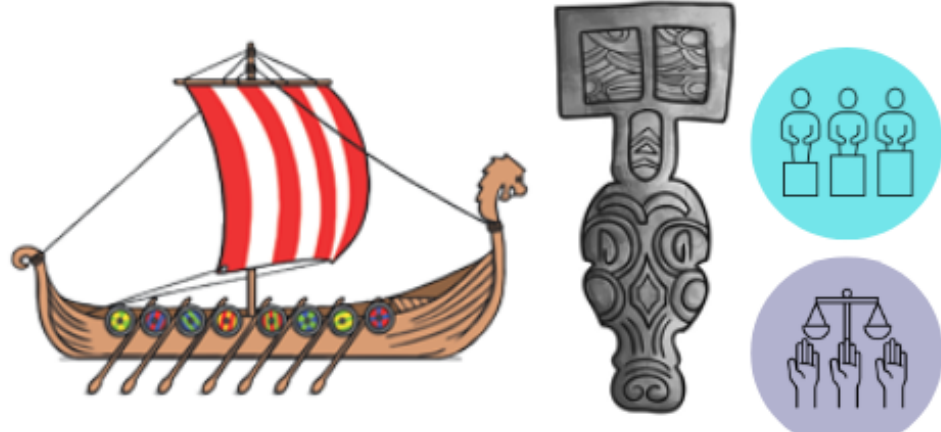
Africa and Ancient Egypt



A focus on both **geography** and **history**. Children will use mapping skills to locate famous landmarks that have survived since the time of the pharaohs. They will learn about the significance of the River Nile and how the Egyptians developed early communication methods through hieroglyphs.

Y5 Curriculum

Vikings and Anglo-Saxons



A focus on **history** and the struggle for power for the Kingdom of England. Children will learn about daily life in this era after the Romans left. They will learn about differing religious beliefs of Vikings and Anglo-Saxons.

Ancient Greece



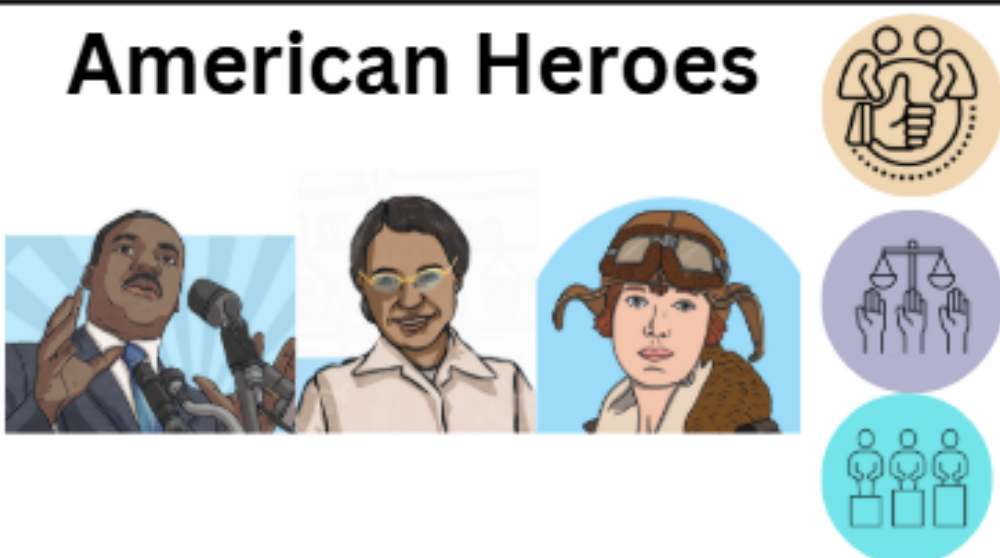
A focus on **history** and the influence that Ancient Greece has had on the modern world. Children will learn about life in Ancient Greece, including myths and legends and the birth of the Olympic Games.

Route 66



A focus on **geography** and locational knowledge of the USA. Children will learn about how transport links can change the human geography of a town, city or country and how physical geography can influence travel.

American Heroes



A focus on **history** and significant events from across the world. Children will learn about how people began to challenge the laws and how boycotts were used to build a collective voice against oppression. Children will look at historical segregation and discrimination.

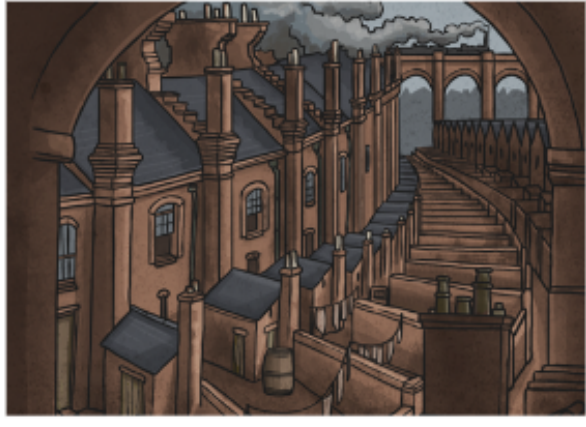
Whitby



A focus on **history** and **geography** to explore the physical and human influence on a coastal town. Children will make comparisons with Leeds and look at how the development of the railway improved trade and tourism during the Industrial revolution in Victorian England.

Y6 Curriculum

Leeds - Then and Now



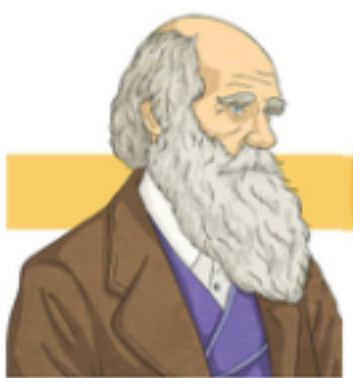
A focus on **history** and **geography** with a study of our local history in Leeds and how a changing monarchies affected the local area. Children will learn about significant local heroes and how the suffragettes supported the women of Leeds to have a voice. Children will learn about social justice and equity and how this has changed over time.

Earthquakes



A focus on **geography** that builds on a knowledge from Y4 and the study of volcanoes. Children will learn about the major tectonic plates, the affect their movement has and look at the impact of living in an area of earthquake risk. Secondary effects of earthquakes will also be explained and how we can avoid adding to the danger.

The Galapagos Islands



A focus on **history** and **science** with learning focusing on a significant turning point in history. Children will learn about the work of Charles Darwin and his contributions to modern science. Children will also learn about the journeys that people took from the Caribbean to the UK and the positive impact that they have had on our society.

Regeneration



A focus of **geography** developing a deeper understanding of both human and physical factors. Children will explore the regeneration of our city and how it has been improved for all.

War



A focus on **history** that builds on a knowledge of chronology beyond they Anglo-Saxons. Children will learn about the impact of both WWI and WWII. They will build an understanding of democracy, rights and social justice through learning about the Holocaust. Children will see the war through the eye of a child living in the 1940's and compare this with life today.